



WAREHOUSE BUILDING

123 GREAT BEAR ROAD
VOLNEY, NEW YORK 13069

For Sale



PROPERTY FEATURES

CONSTRUCTION

Metal panel, Butler style construction with concrete floors and clear ceiling heights from 26' at the eaves to 30' at the peak; circular steel columns spaced 26' x 50'.

SPRINKLER

100% protected via a dry-pipe system.

TRUCK LOADING

Thirteen (13) total doors; One (1) 9' x 14' ground level door, twelve (12) 9' x 10' dock high doors with levelers, Dok-Loks and weather seals.

LIGHTING

Sodium vapor fixtures

UTILITIES

Power supplied by National Grid; 480V, 3-phase, 600 amp service; Natural gas supplied by National Grid located on-site.

ROOF

Metal; standing seam system.

RAIL

CSX rail line adjacent to site.

LOCATION

Strategically located approximately 4 miles from Route 481 and approximately 3 miles from downtown Fulton, New York.

Contact Exclusive Agent:

Bart Feinberg
Associate Broker

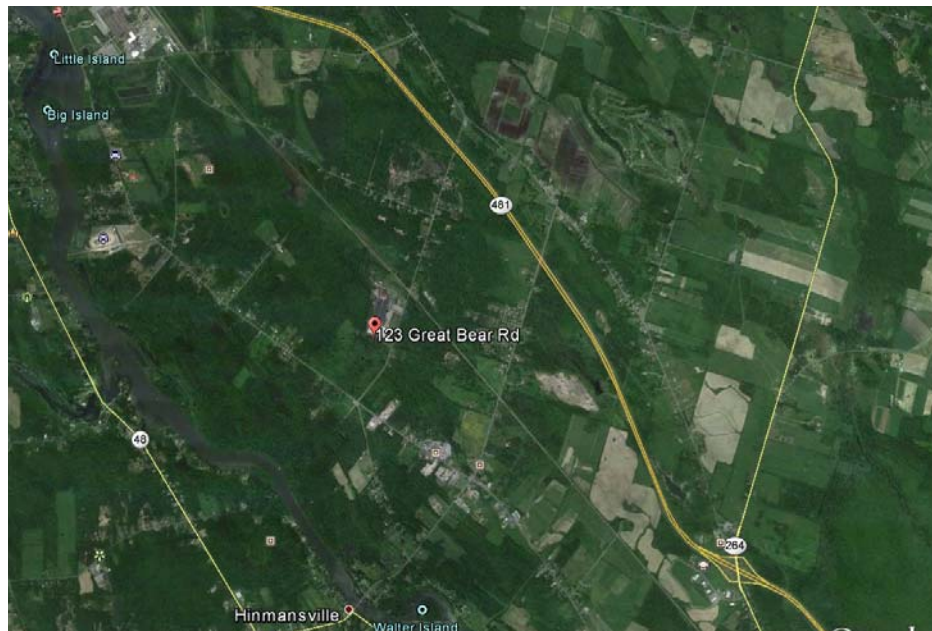
◆ Mobile: 315.447.8668
◆ Email: bfeinberg@suttoncos.com

Sutton Real Estate Company, LLC
525 Plum St, Ste 100, Syracuse, NY 13204
Phone: 315.424.1111 • Fax: 315.424.1383
www.suttoncos.com



WAREHOUSE BUILDING
123 GREAT BEAR ROAD
VOLNEY, NEW YORK 13069

For Sale



Contact Exclusive Agent:

Bart Feinberg
Associate Broker

◆ **Mobile: 315.447.8668**
◆ **Email: bfeinberg@suttoncos.com**

Sutton Real Estate Company, LLC
525 Plum St, Ste 100, Syracuse, NY 13204
Phone: 315.424.1111 • Fax: 315.424.1383
www.suttoncos.com

All information contained herein is from sources deemed reliable and is submitted subject to errors, omissions, changes in price or other conditions, prior sale, leasing without notice. Principals should not rely solely upon the information contained herein.