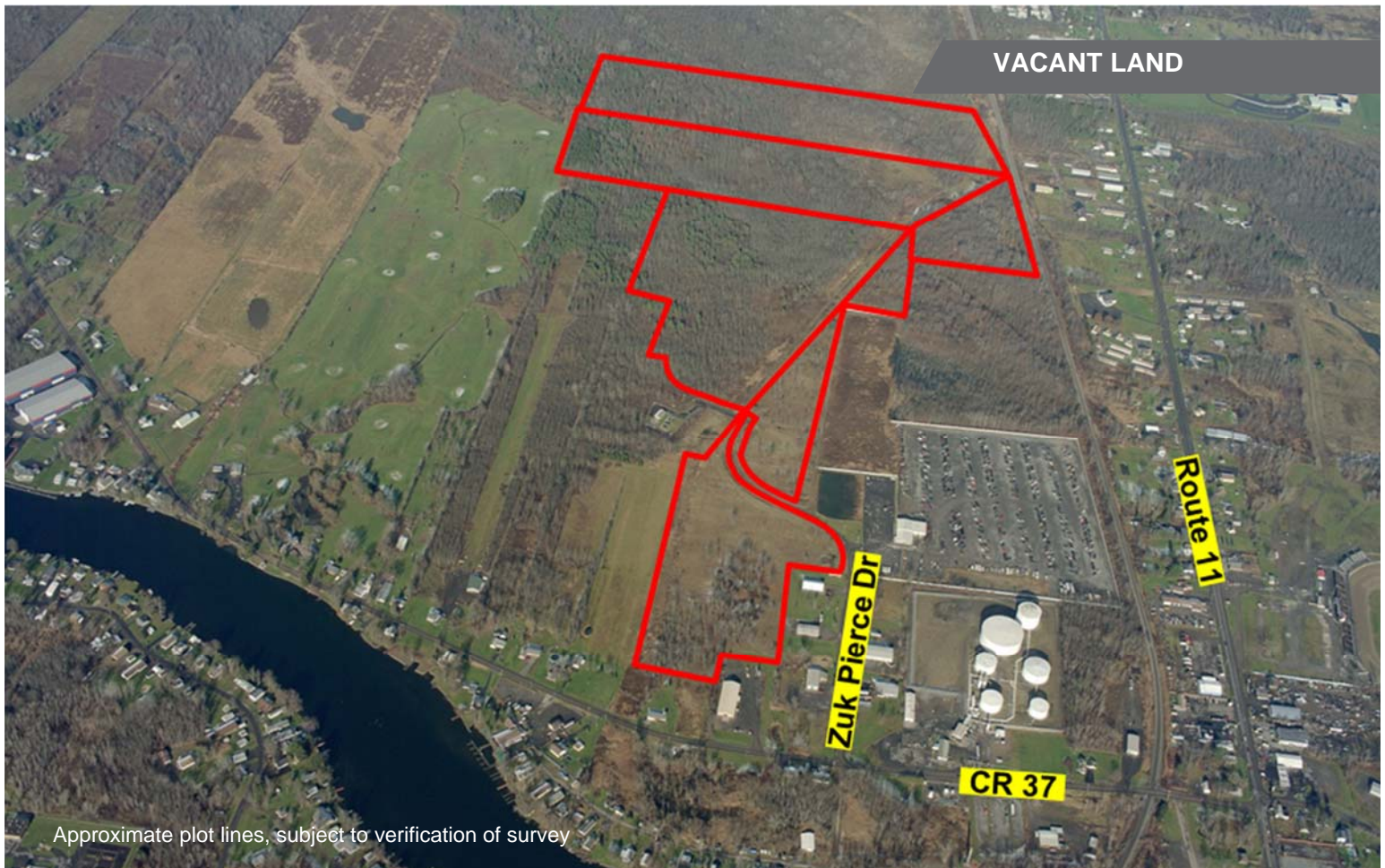




FOR SALE

Zuk-Pierce Drive

Hastings, New York 13076



Approximate plot lines, subject to verification of survey

1.0-134± Acres Available

Property Highlights

- Owner will subdivide lots from 1.0 to 134± acres ready to build
- Great area for commercial or residential development
- ¼ mile from Route 11
- Railroad siding possible
- Land is located near Route 11 and I-81
- Availability to access high pressure gas line
- Location is 20± minutes from Syracuse
- All public utilities on site; Zoned Industrial
- Great for warehouse, manufacturing, storage or recreation
- Less than ½ mile from Onondaga County
- Enjoy benefits of operating in Oswego County, business friendly

For more information, please contact:

Lila "Lee" M. Salvetti
Associate Real Estate Broker
315.445.8524(o) 315.254.3447(c)
lsalvetti@pyramidbrokerage.com

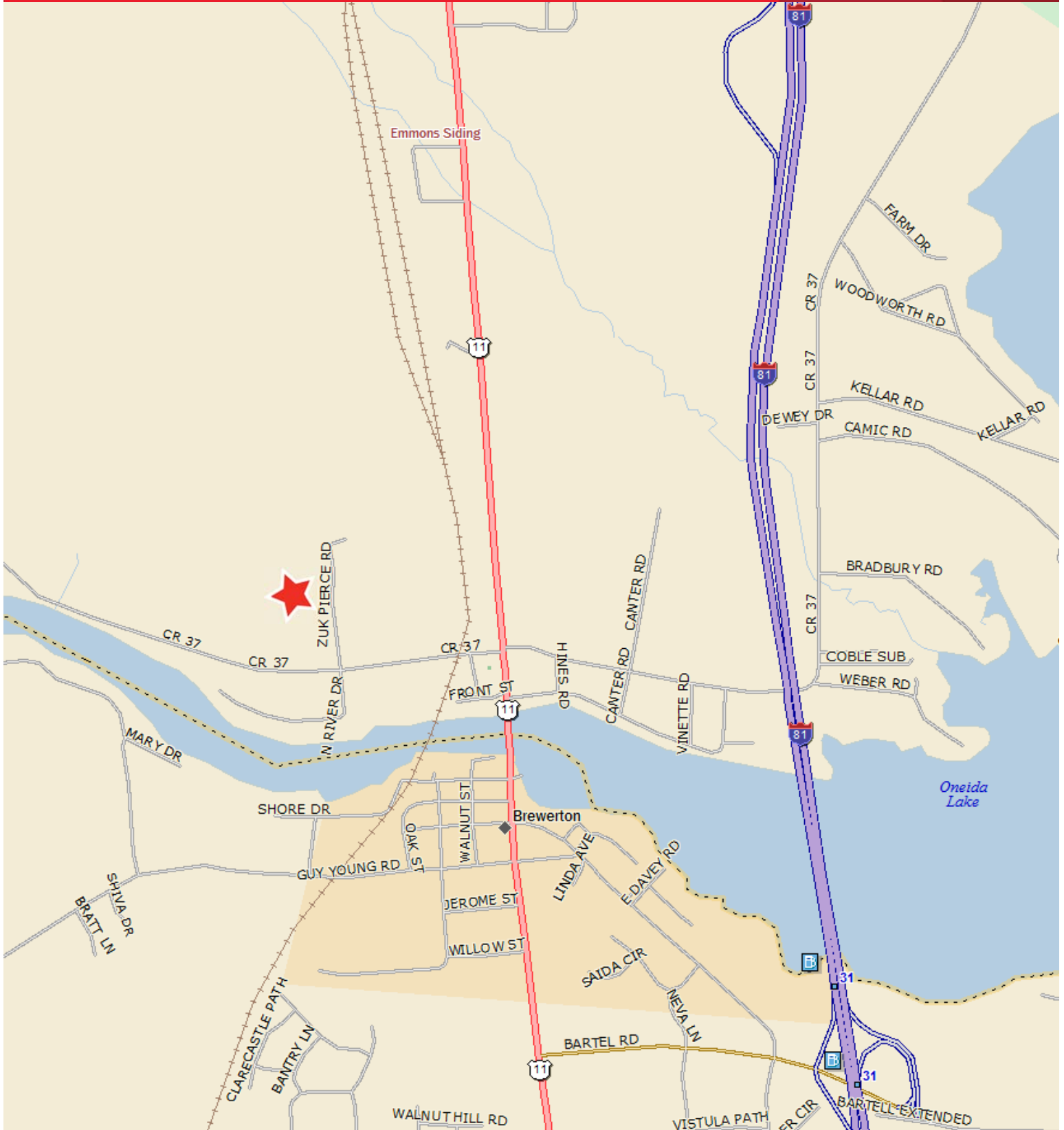
5786 Widewaters Pkwy, P.O. Box 3
Syracuse, New York 13214
phone: +1 315 445 1030
pyramidbrokerage.com

Independently Owned and Operated / A Member of the Cushman & Wakefield Alliance

Cushman & Wakefield Copyright 2015. No warranty or representation, express or implied, is made to the accuracy or completeness of the information contained herein, and same is submitted subject to errors, omissions, change of price, rental or other conditions, withdrawal without notice, and to any special listing conditions imposed by the property owner(s). As applicable, we make no representation as to the condition of the property (or properties) in question.



FOR SALE
Zuk-Pierce Drive
 Hastings, New York 13076



Independently Owned and Operated / A Member of the Cushman & Wakefield Alliance
 Cushman & Wakefield Copyright 2015. No warranty or representation, express or implied, is made to the accuracy or completeness of the information contained herein, and same is submitted subject to errors, omissions, change of price, rental or other conditions, withdrawal without notice, and to any special listing conditions imposed by the property owner(s). As applicable, we make no representation as to the condition of the property (or properties) in question.